



Date: 23/02/18 **Author:** THM/CD **Project:** LSCCCD2302
Location: 53.030578,-7.252491

Comments:

Traffic Management Plan for Semi Static Stop & Go to enable Laois Co. Co. with Hedge Cutting works on the N80, Laois

Manifest

- 12 x P 002
- 2 x RUS 060 Stop and Go Disk - STOP
- 1 x RUS 061 Stop and Go Disk - GO
- 4 x RUS014 No Overtaking
- 2 x steady lamp
- 1 x vehicle with attenuator
- 6 x WK 001 Roadworks Ahead
- 6 x WK 061 Flagman Ahead
- 1 x work truck

Works Shall not exceed more than 2 kms at any time

Note 1: Written dimensions are preferred, do not scale dimensions. All dimensions to be checked before work commences and any discrepancies reported. All traffic Management to be carried out in accordance with Chapter 8 of the Traffic Signs Manual in force at time of construction.

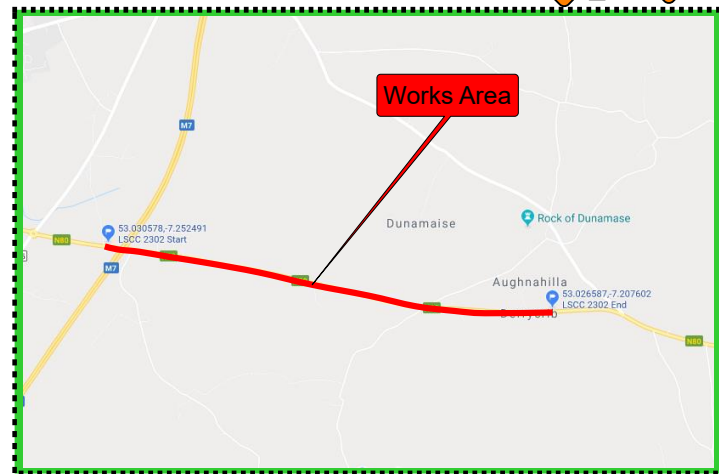
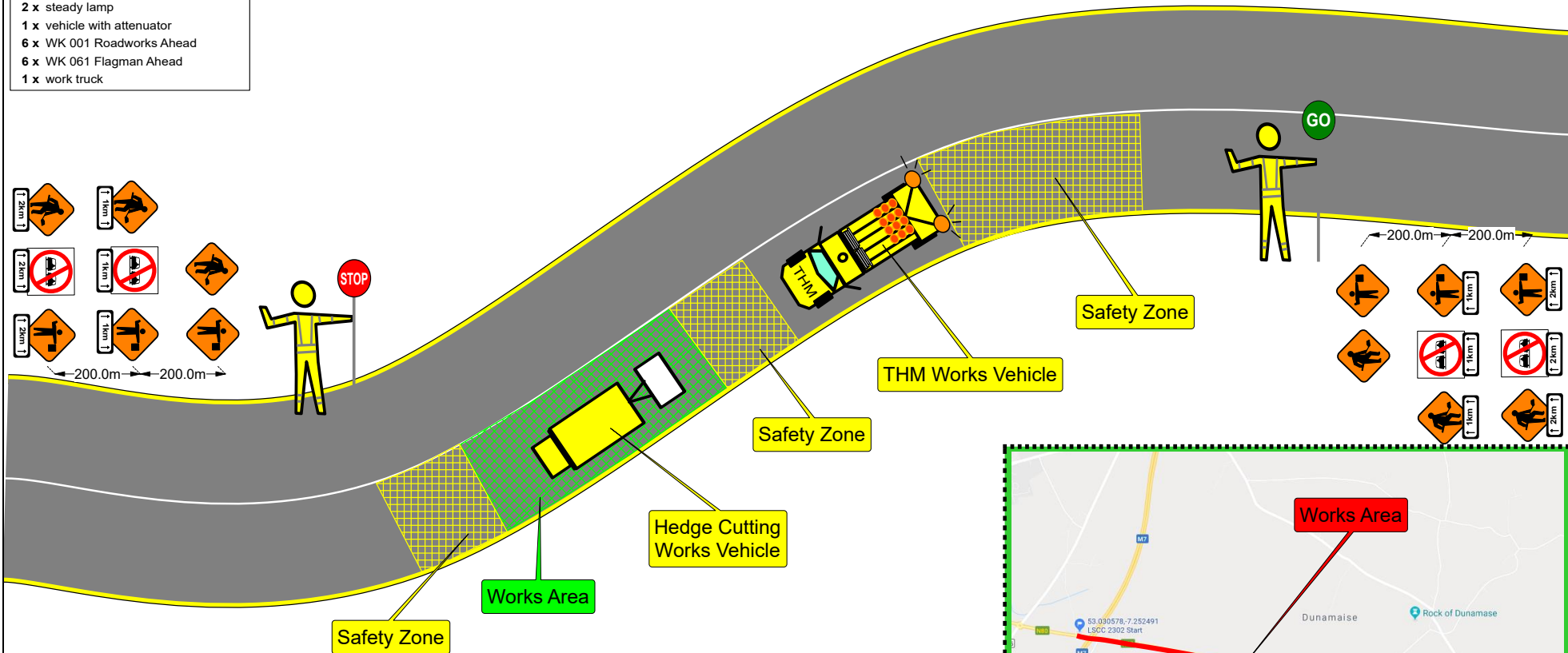
Note 2: All signage to be erected outside visibility plays at junctions and site access.

Note 3: Traffic Management will be audited and monitored in order to ensure safety and adequate traffic manoeuvrability. Should changes be required, drawings will be revised accordingly.

Note 4: Interaction with local residents and landowners will be carried out by the main contractor.

Note 5: All lighting requirements within the works area will be the responsibility of the main contractor.

Design Parameters	Roadworks		
	Type A (Full-Time)	Type B (Part-Time)	Type C (Short Duration)
Speed Limit	80 km/h or 100 km/h		
Temporary Signs			
Sign Visibility (m)	120	120	
Number of Signs	4	3	
Cumulative Distance (m)	800	600	
Distance between advance signs (m)	200	200	
Minimum Rate of Taper			
Taper at Lane (m)	1 in 55	1 in 40	
Taper at Hard Shoulder (m)	1 in 30	1 in 20	
Maximum Lamp Spacing			
At Taper (m)	6	6	
Longitudinal (m)	12	12	
Maximum Cone Spacing			
At Tapers (m)	3	3	
Longitudinal (m)	12	12	
Cone Height (mm)	750	750	
Safety Zone			
Longitudinal (m)	60	45	
Lateral (m)	1.2	1.2	
Minimum Lane Width			
Min Lane Width (m)	3.0	3.0	



Legend

	Safety Zone
	Work Area